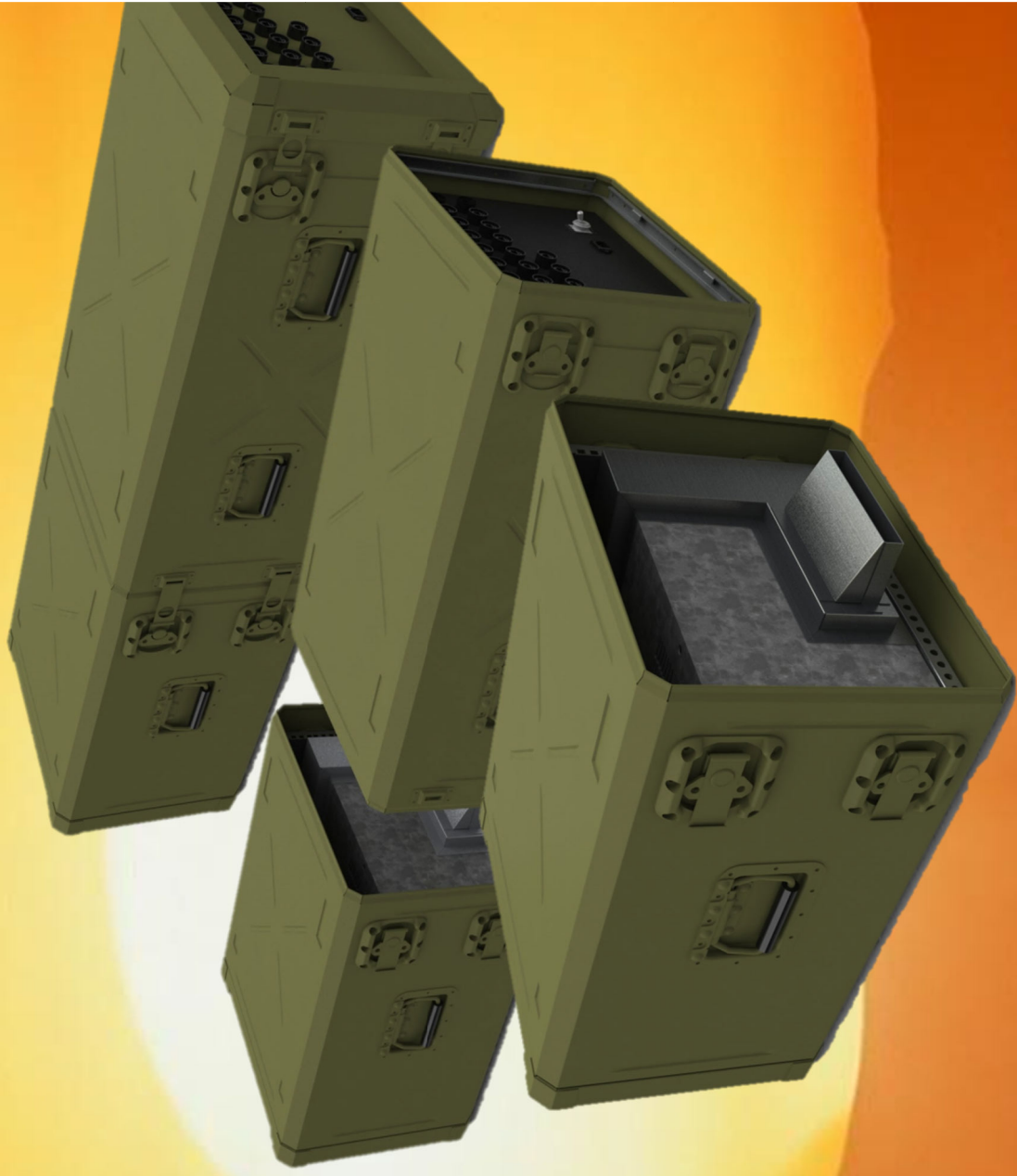


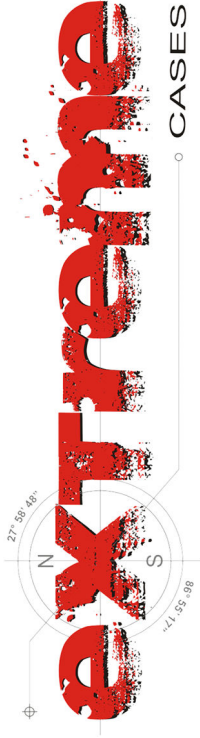


Climate Control



Climate Control

coolerate



Rack Mounted Climate control

- High Capacity radial-flow fans on ball bearings
- Integrated condensate evaporator & frost protection
- Easy access of internal parts
- No dust issues from external air circulation due to special coating
- 6u 19" rackmounted
- Extreme Shock rugged housing
- Cover mount or stand alone options
- Recessed fittings
- Available in 600w/850w/1450w
- European manufacturer



Climate Control

COOLPACK

Cover Mounted climate control

- Thermoelectric Air Conditioner
- Suitable for single case applications
- 19" rack mount or rear cover mounting
- Cooling units : 60 to 800 watts
- NEMA 4X (indoor/outdoor use)
- Cooling and heating available
- No filters, refrigerants or compressors
- Extreme 19" Shock rugged housing
- Recessed fittings

