

extreme

CASES

SHOCK



THE EXTREME RANGE OF 19" & 19 1/2 SHOCK-MOUNTED CASES - ENGINEERED WITHOUT COMPROMISE.

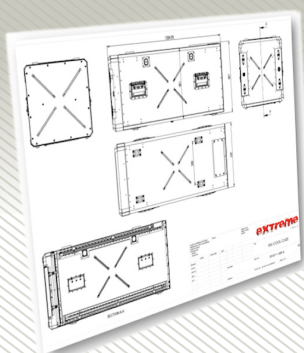
Involving integrators and end-users in the initial design of the cases enabled us to include unique features that would make life easier for integrators and user friendly for operators.

We feel that flexibility is the key to meet the demands of today's marketplace, short lead-times to support UORs and cases tailored to suit your exact requirements we think gives Extreme a market leading product.

FEATURES

- High strength aluminium alloy offering optimal tensile and shear strength.
- Push-fit front and rear covers which are easily secured / released with positive locking compression latches.
- Inner rack offered as slide-in / out as standard or fixed available to reduce weight and cost.
- IP65 (water and dust tight) ingress protection.
- Anti-vibration mounts (natural rubber) fitted as standard.
- Anti-shock mounts available in rubber, wire rope and leaf spring form.
- Unique textile skirt seal offering IP54 protection with the covers removed.
(Shielded option available).
- Stacking feature designed for an easy to locate slide-on stack.
- Extra large lightweight recessed carry handles.
(Suitable for arctic mitts).
- Option: Roping eyes for lifting, lashing and securing stacked cases.
- Option: Pressure relief valves (manual or auto, Mil-Std).
- Option: Humidity indicators and dessicants.
- Range of pre-treatments (e.g. alocrom 1200 or non-chromate) and paint finishes available including standard powder coat, IRR and CARC.

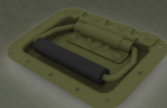
KEY DIMENSIONS



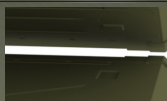
- Heights: range from 3U to 24U
- Width: 543mm but can be varied on demand
- Sway space: min 30mm
- Length: as required

IN DEPTH

Body: Engineered to your requirement.



Extra large lightweight recessed carry handles (suitable for arctic mitts).

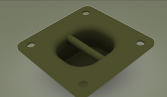


Positive pressed stacking feature designed for an easy to locate slide-on stack.

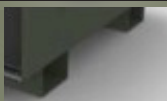
OPTIONS



Protected side latches.



Strapping eye for secure stack with webbing straps.



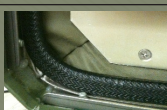
Forklift skids.



Recessed connector bulkheads.



Detachable lifting eyes.

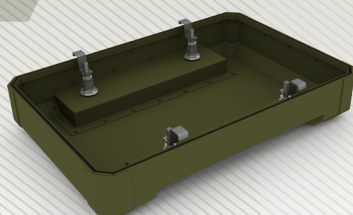
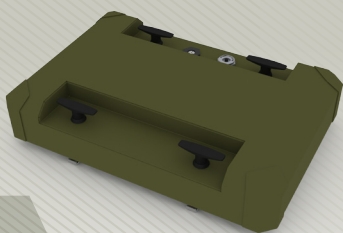


Environmental/shielded 'Skirt Seal' IP54 protection with the covers off.



'Cover hangers' - side locations for storing covers.

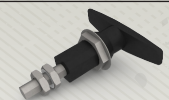
Available in depths from 63mm (min) to 190mm (max)



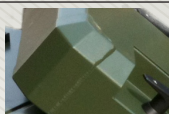
One cover fits all - CNC punched & precision folded cover with 'over-body fit' allows for consistent fit & positive closure. High quality gasket environmental sealing is provided by a platinum cured silicone tube secured into a stainless steel channel.



Our unique double pockets provide options to mount connectors and indicators without risking damage during transit or storage.



Large die-cast handle and stainless steel cam for reliable latching onto the main body. Offers IP65 protection.



Reinforced 'Krytons' corners welded reinforcements provide superior impact strength to the corners.



Pressure relief valves in either manual or auto configuration to manage under and over-pressure during transit.



Humidity indicators to detect changes in humidity in moisture sensitive electronics enclosures.

Case Study I

Client: Serco GmbH

Product: 6u Shock

Application: Deployable Network

Special features:

- Fully shielded
- Recessed rack
- Gasketed front flange and panel
- Air condition system vented through rear cover
- Custom designed spacer feet



IN DEPTH

High strength - Low weight

Options to manufacture in stainless steel (type 304) for strength or aluminium for cost and weight.

Rack lengths

We can produce any rack length but common configurations are: 350/480/ 610/762/914 and 1067mm.

Rack 'U' height

Standard 'u' heights (44.45mm) available from 3u (in standard configuration) to 24u.

Slide-in / Slide-out

Our SI/SO rack is offered as standard, making your integration & field maintenance far easier.

Robust construction

High shear- strength dome head and counter-sunk rivets.

EMI Shielding

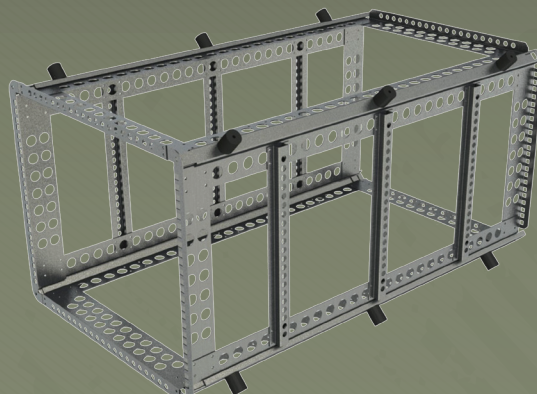
We can increase our standard level of shielding effectiveness by enhancing the design of the rack.

Mounting options

Front, side and rear 19" fixing positions as standard, other options available on request.

Other options

Including custom shelving, cable management, earthing & lightning protection.



LIGHTWEIGHT SOLUTIONS



Where weight is critical we have developed a range of lightweight 19" options.

Using an innovative range of materials and fittings we can engineer weight out without sacrificing strength.

Also take a look at our ballistic range of rugged shockmounted rucksacks for man-portable applications.

CLIMATE CONTROL

COTS equipment in rugged 19" Enclosures are being asked to perform in more Extreme environments than ever.

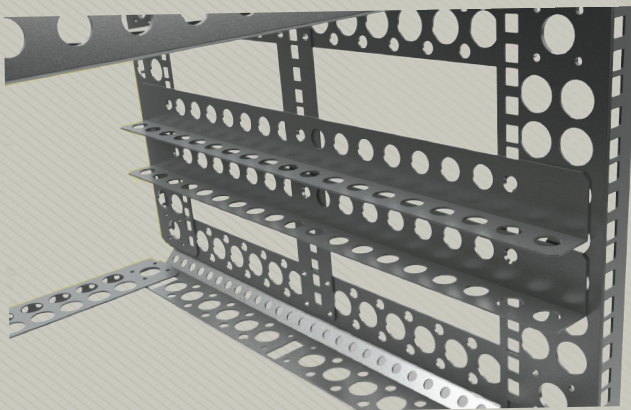
Therefore most systems require some degree of forced cooling or heating.

Early on in the design process any thought given to the location of components in the enclosure, the heat to be dissipated and the amount of space needed for the cooling device will save time, trouble and expense.

From fans to efficient compact thermoelectric units our engineering team have a wide range of experience in thermal solutions.



METAL WORK



Integration can be problematic, so we think having a flexible partner with a high level of customisation skills is essential. Our highly automated factory, advanced engineering and soft tooling makes it easy to tailor the Shock racks to suit your application.

- Custom rack lengths
- Support shelves
- Cable management
- Panels
- Drawers and slide trays



Case Study 2

Client: Atlas Elektronik

Product: 16u 19" Shock

Application: Ruggedised telephone exchange for Ships

Special features:-

- Externally mounted 'X' type AV mounts
- Fully shielded including laminated mesh polycarbonate viewing screen
- Fire suppression nozzle
- Rear fans
- Cable glands

SPECIFICATIONS

The Extreme Shock case is tested & certificated to the following elements of Mil-Std 810F

Vibration



Transit Drop



Functional Shock



High Temperature



Humidity



Salt Fog



High Altitude



Temperature Shock



Blowing Dust



IP65 BS EN 60529



The Extreme range has also been successfully tested for shielding efficiency



For detailed information on all tests please contact the office



Franklyn House, Bratton Fleming, Barnstaple,
North Devon EX31 4TG

t +44 (0)1598 711856 e sales@extreme-cases.com